



PRODUCT & SERVICE

SystemTALK)))

where system can say

Table of Contents

Active Information Web Platform..... 3
 Overview
 Features
 Screenshot

OPC TALK 7
 Overview
 Enable Factory Instant Messaging
 Publishes Process Information
 It is customizable

Power Alert 10
 Overview
 Features
 Specification

MES : SPC 11
 Statistical Process Control
 Real Time SPC

About us 12
 Technology

Active Information Web Platform

Overview

Web based visualize information becomes easier ever by using SystemTALK's solution. With Active Information Web Platform, AWeb, it connects to various types of data source. It turns process data to visualize information. With Internet Explorer, everyone can easily access information.

Features

Data sources

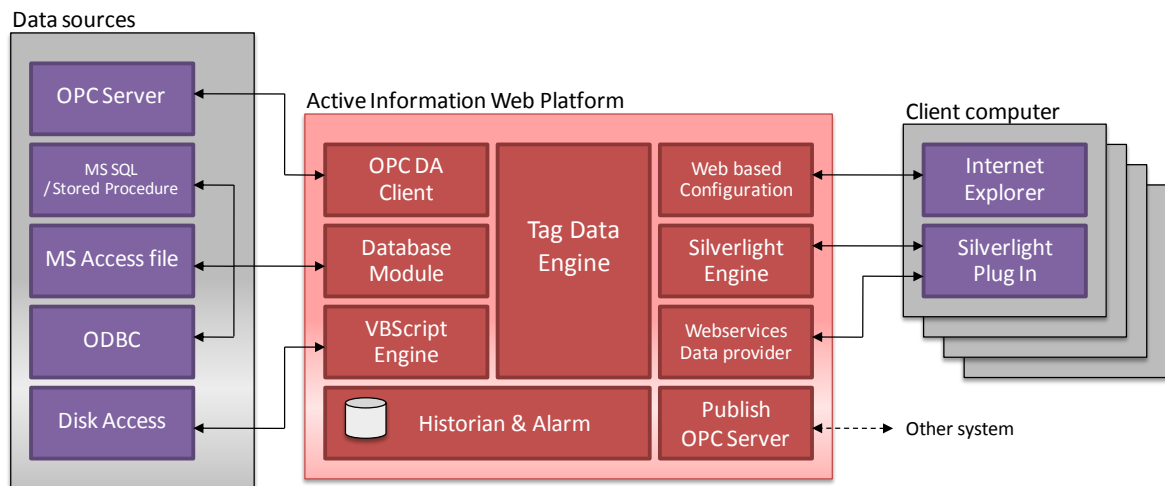
- Get process data from various sources such as OPC servers, databases and VBScript equations.
- Work as OPC DA client to read and write to OPC server data sources.
- Exchange data with MS SQL database, Stored Procedure, MS Access file, and ODBC.
- Define calculation value and access to files using VBScript language.

Special Features

- Work as OPC server to provide data to other systems.
- Web based authorization management.
- Historical database for logging data.
- Alarm management.

Graphic Display

- Rich Internet Application (RIA) using Microsoft Silverlight technology
- Data and report using HTML5 with responsive design
- Real-time visualize information.
- Online edit for graphic layout
- Exchange data with web server using webservises
- Included standard graphic library, eg. TextEdit, Label, Gauge, Level, Lamp, Button etc.
- Support video clips and true color images
- Support real-time charts and trends
- Included alarm management and historian data logger
- Support Thai and English languages



Screenshot

Productivity

Your factory productivities can be simply reported as table. Set up data can be written back to PLCs. Using product ID in PLCs to retrieve product name from master database.



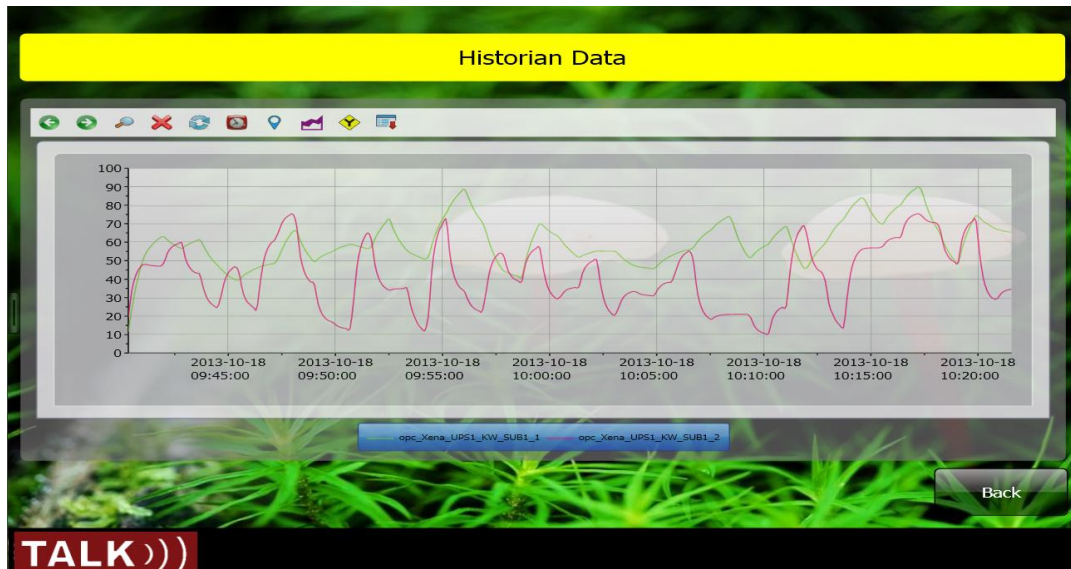
Trend, Chart and Gauge

Many components such as trend, pie chart, gauges, level indicator are included



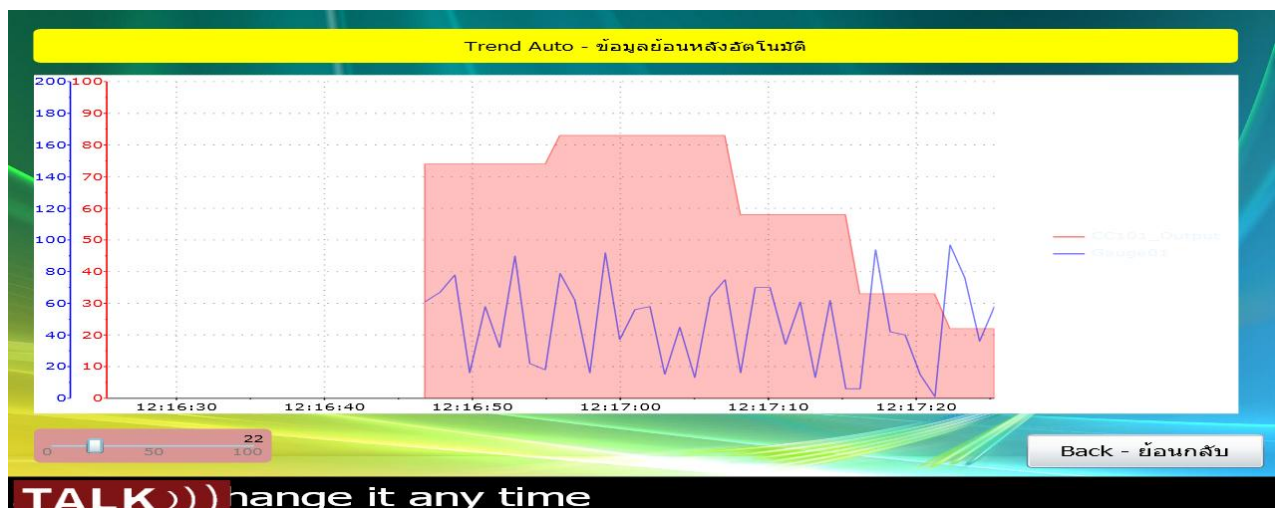
Historian Data Logger

Logging data can be chosen to record to MS SQL or MS Access files in just a few clicks. You can see what was going on in the past by the graphic historian component.



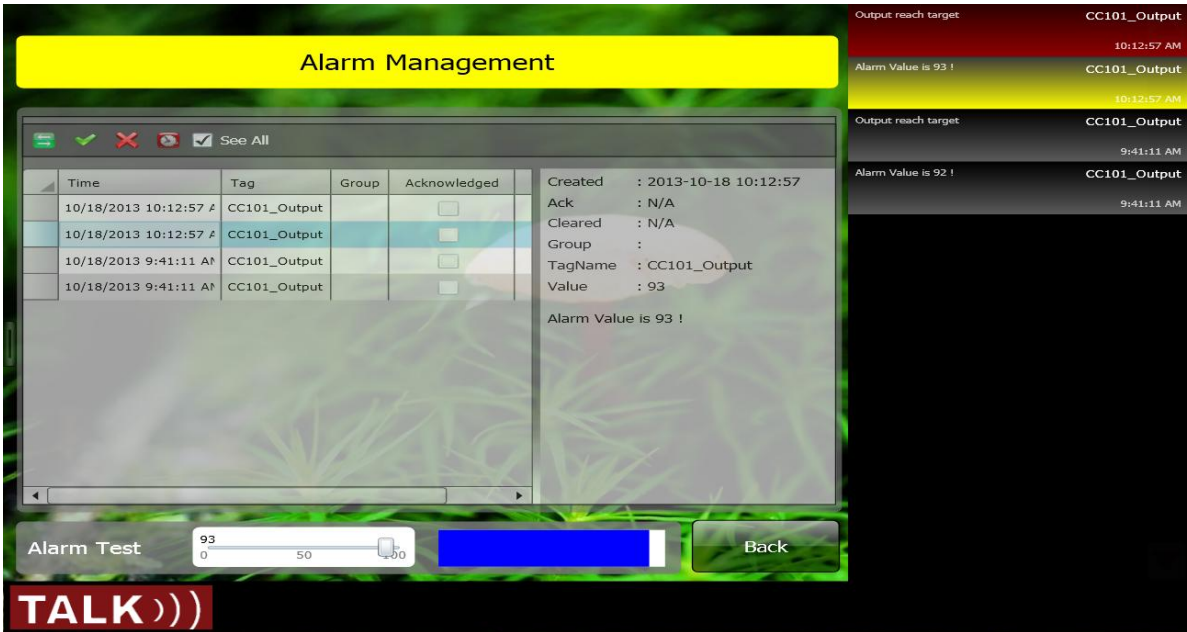
Automatic Trend

Simple data trend can be added to graphic screen. No data is recorded to harddisk. The purpose is to monitor some specific data on the fly.



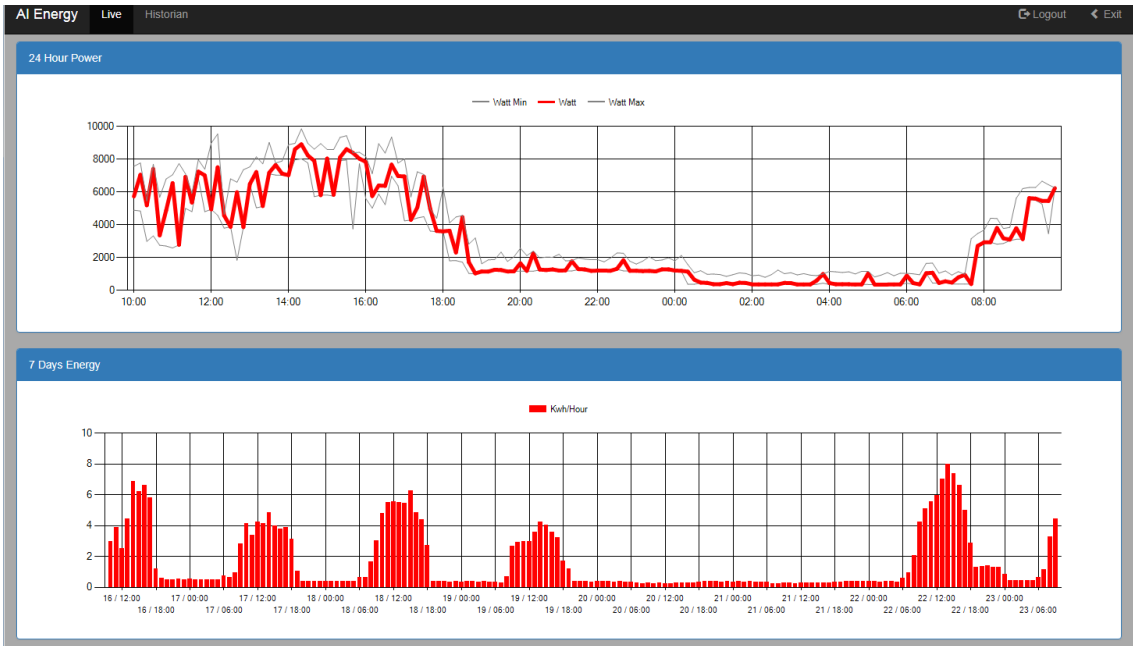
Alarm Management

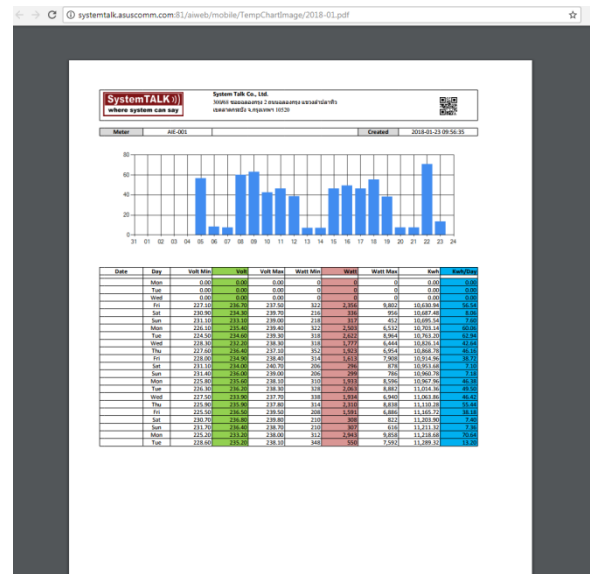
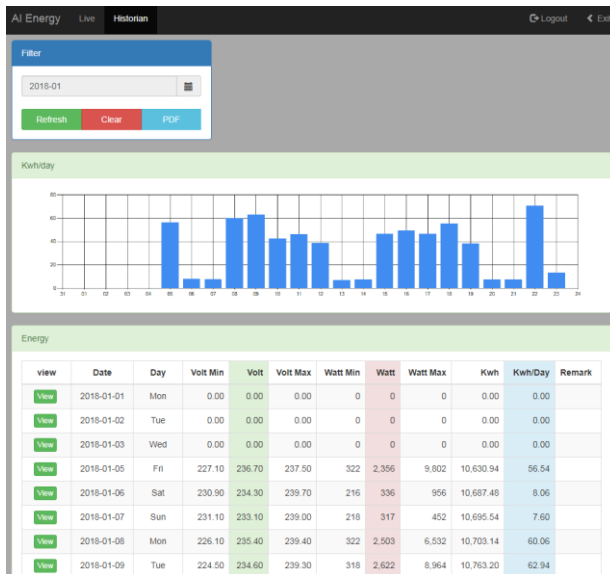
The tag engine supports alarm trigger. Out-of-the box alarm management component can be deployed to any graphic screen.



HTML5 with Responsive Design

AIWeb mobile enables any web browser to access data. It supports HTML5 with responsive design. User can easily filter and generate Excel/PDF report from any devices.





Software Specification

Server Requirement	PC with Intel Core i3 and 4GB of RAM Windows XP, 2003 server or newer MS .NET Framework 3.5 SP1, ASP.NET 2.0, MS Silverlight 5.0 SQL Server 2008 Express or newer
Client Requirement	PC with Intel Atom Quad Core and 1GB of RAM Windows Operating System Internet Explorer 7 with MS Silverlight 5.0 Plug-in
Tag Engine	5,000 Tags +
Publish OPC	100 Tags (Having option to buy more)
Number of Client Connection	Depended on server hardware performance User or Fixed IP Licenses
Historian Storage	MS SQL Server
Alarm Storage	MS SQL Server

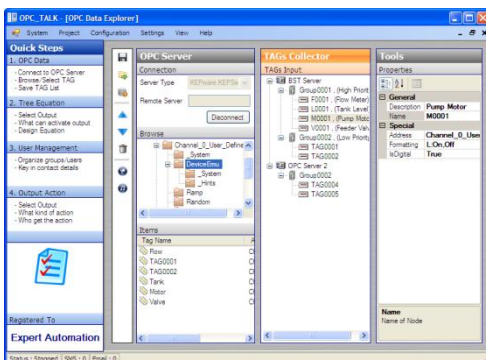
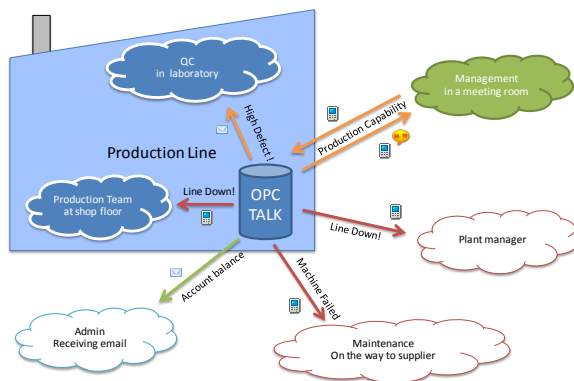
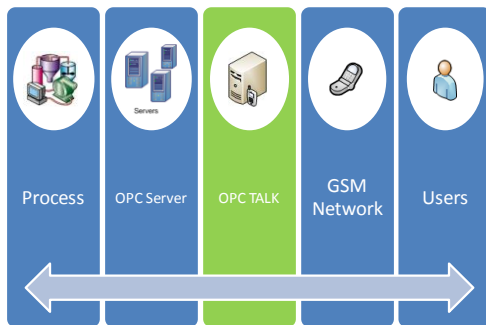
Comparison

	Other SCADA	AIWeb
Platform		
Back End	Windows Application	Windows Application
Client Access	Windows Based	Web Based + Microsoft Silverlight Plug-in
Support Client OS	Windows	Windows / MAC (Safari + Silverlight)
Connectivity		
Built-in PLC Protocol	Various Built-in Protocol	Fewer Protocol
OPC Server	Yes	Yes
Database Access	Using Script Language	Direct access eg. ODBC, MS Access, SQL Server, Oracle
SQL Stored Procedure	N/A	Yes
Script Language	VBA / Proprietary Script Language	Microsoft VB Script
Graphic & User Interface		
Image	True Color	True Color with transparency
Video	N/A	Yes
Sound	Wave	Wave/MP3
Dashboard Style	N/A	Gauge, Bar, Lamp, Multi Chart with animation
Gantt Chart	N/A	Yes
Mobile Device		
Android/iOS	N/A	HTML5
Device Screen Size	N/A	Bootstrap Mobile First
Graphic	N/A	Text, Image, IP Camera, Chart, Table
Module		
Alarm	Very strong	Fewer function
Data Logging	Built-in / Additional License	Built-in
Development License	Sold separately	Free of charge
Special Feature		
PID Controller / Tuning	Yes	No
IP Camera	N/A	Snap shot jpeg (stored / display)
Barcode Reader	N/A	Via Serial Port
Thai Language	N/A	Support
Target Application	Machine Control	Dashboard, Production Summary, Plant Monitoring
	Petrochemical, Oil & Gas	Data Integration

OPC TALK™

Overview

More and more automate machines are in your production lines. How we know what problems they have and how good they work now. OPC TALK™ is a powerful and cost effective solution to gather information from your production to be accessible by your mobile phone. Alerts of critical notification such as machine breakdown, efficiency or level of quality go down will be sent to you. You are also able to access production information from your machines such as production output, qualitative information by your SMS.



Simple Setup

Implement OPC TALK™ is as simple as D.I.Y. By enable a proper OPC server to link with your automate machines and connect it with a OPC TALK™ GSM/GPRS modem, you can define users, gather information and configure actions base on your business conditions.

Features

- ☐ Analyze pre-defined process data via a proper OPC server
- ☐ Send pre-defined alert/alarm to your mobile phone through SMS and/or send to email address.
- ☐ Request pre-defined information from the system by using SMS or IVR with password protection.
- ☐ SMS will be able to send to group of people.

System Configuration

OPC TALK™ is configurable system which you can configure the system to fit with your business conditions without any programming and less support required which includes.

- ☐ User management
- ☐ OPC data collector
- ☐ Condition Editor
- ☐ Action of Alert / Alarm
- ☐ Report template
- ☐ IVR (Interactive Voice Response)

	Standard	Professional	Enterprise
Tag	100	200	500
Condition	100	100	100
Modem	1	Up to 2	Up to 2
GPRS Email		<input checked="" type="checkbox"/>	<input checked="" type="checkbox"/>
Report (On Schedule)	<input checked="" type="checkbox"/>	<input checked="" type="checkbox"/>	<input checked="" type="checkbox"/>
Report (On Demand)		SMS	SMS/IVR
Report Type	SMS/Email	SMS/Email	SMS/Email/Fax/IVR

Alarm Only

On Demand

Voice

Version

Offers three different versions.

- ☐ Standard version is supporting single modem with SMS and standard Email.
- ☐ Professional is able to handle a couple of modem and be able to send Email without the need of internet connection (GPRS Email).
- ☐ Enterprise allows predefined users to make a voice call to request reports and/or listen process status

Power Alert™

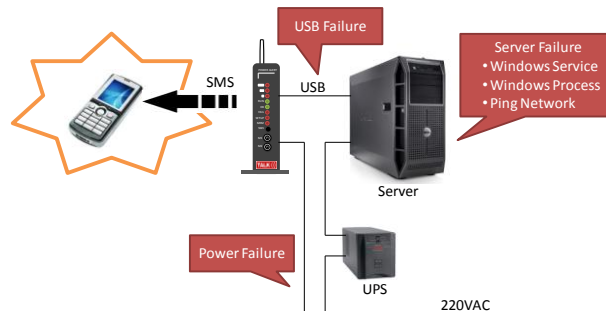
Overview

Electricity black out and computer crash are unpredictable failure in factory. SMSs can be sent to responsible persons immediately when something went wrong. Power Alert Plus, additional computer software, help increase the functionality without additional cost. Faster we know means better recovery time.



Features

- ☐ Send SMS when electricity lost or recovered (Power Failure)
- ☐ Send SMS and email when Windows processes / services stop or start (Server Failure)
- ☐ Send SMS when computer crash or blue screen (USB Failure)
- ☐ Included battery backup

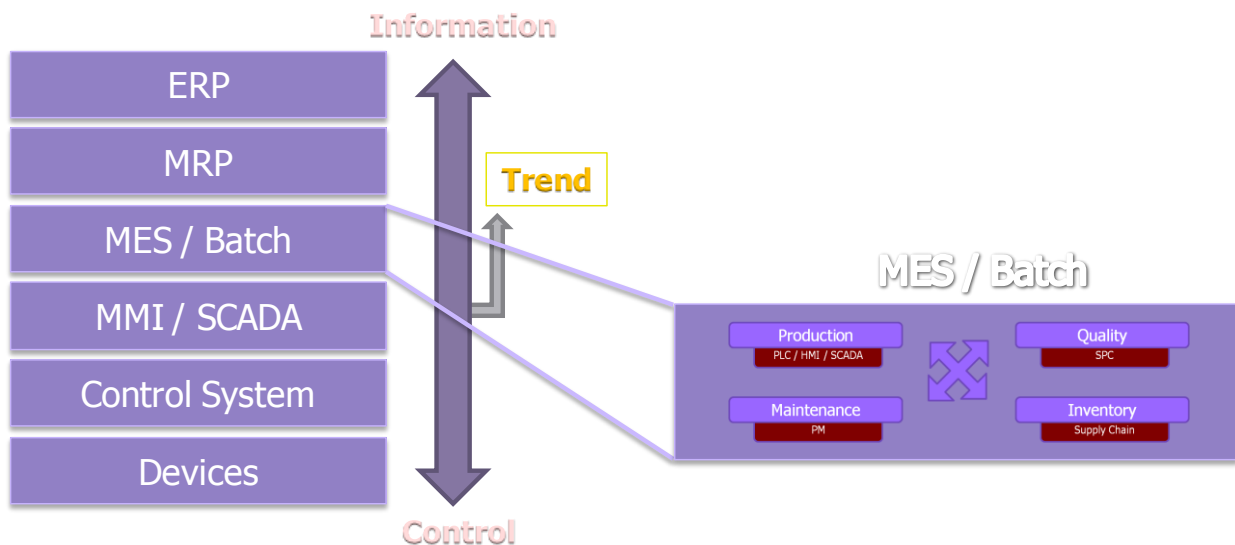


Hardware Specification	
Dimension	73mm x 105mm x 47mm
Weight	500g
Power	Adapter 5VDC 1.0A Standby <0.2A Charge <0.3A GSM <0.7A
Temperature	Working 0-40°C Storage 0-70°C
Frequency Band	800/850/900/1900/2100MHz@UMTS 850/900/1800/1900MHz@GSM
Transmit Power	Class 3 (+24dBm +1/-3dB) for UMTS bands Class E2 (+27dBm ±3dB) for EDGE 850/ 900MHz Class E2 (+26dBm +3/-4dB) for EDGE 1800/ 1900MHz Class 4 (33dBm ±2dB) for GSM 850/ 900MHz Class 1 (30dBm ±2dB) for GSM 1800/ 1900MHz
SIM Card	1.8/3.3V Mini SIM

MES : SPC™

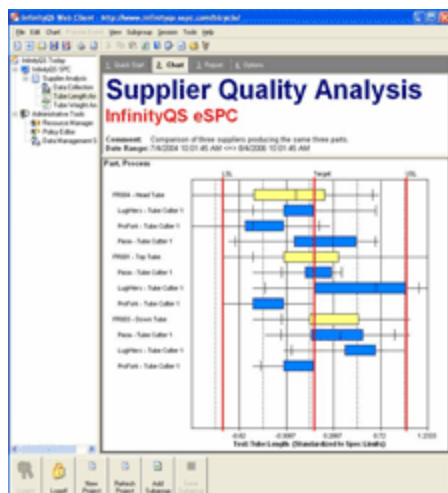
Overview

Manufacturing Execution Systems (MES) manage and monitor work-in-process on the factory floor including manual or automatic labor and production reporting, as well as on-line inquiries and links to tasks that take place on the production floor. Manufacturing Execution Systems may include one or more links to work orders, receipt of goods, shipping, quality control, maintenance, scheduling or other related tasks



Quality : Statistical Process Control

SPC is an effective method of monitoring a process through the use of control charts. Control charts enable the use of objective criteria for distinguishing background variation from events of significance based on statistical techniques



Real Time SPC

Help your QC people monitor the process real time. It can present in chart and trend to easy recognize. For example, Control Chart, Box & Wisker, Pareto etc.

Benefit

- ☐ Dramatically reduce variability and scrap
- ☐ Scientifically improve productivity
- ☐ Reduce costs
- ☐ Uncover hidden process personalities
- ☐ Instant reaction to process changes
- ☐ Make real-time decisions on the shop floor



*Infinity QS is a trademark of Infinity QS International

About us

Overview

We are from factory automation field and are offering customers with ready-to-implement software solution to shorten initial cost and time.

Technologies

Our products & services are based on

- ☐ Microsoft .NET Framework
- ☐ VBA
- ☐ Telemetry
- ☐ GSM/GPRS Modem
- ☐ PLC/HMI/SCADA
- ☐ Etc

Technology
Automation
Linkage
Knowledge

"Customized Project Welcome"

System TALK Co., Ltd.

300/68 Soi Chalongkrung 2, Chalongkrung Rd., Lamplatew, Ladkrabang, Bangkok 10520
Tel: 66-2-360-6642 Fax: 66-2-360-6643 Email: info@systemtalk.co.th
Mob: 66-8-9145-0887 or 66-8-1551-1250 Website : <http://www.systemtalk.co.th>